

FOR SALE - 41,685 SF R&D BUILDING

Irvine Spectrum

8650 Research Drive, Irvine, CA



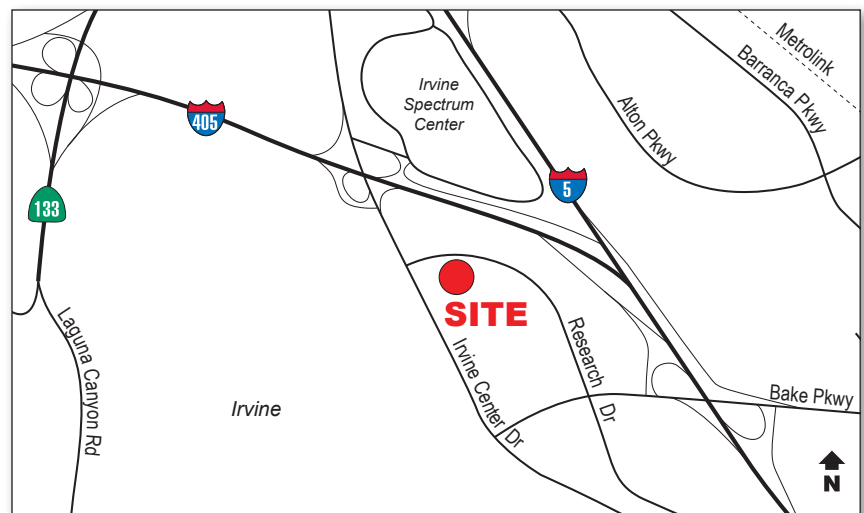
Voit
REAL ESTATE SERVICES

Real People. Real Solutions.™



Features

- High Profile with Freeway Visibility
- ± 28,000 Sq. Ft. HVAC Showroom
- ± 2,500 Sq. Ft. Office Space
- ± 11,000 Sq. Ft. Warehouse
- 3.2:1,000 Parking Ratio
- Two (2) Dock High Loading Doors
- Two (2) Ground Level Loading Doors
- ± 24' Ceiling Height
- ± 1200 Amps Power, 120/208 Volts
- Fully Fire Sprinklered
- One Block to 5, 405 & 133 Freeways



Michael J. Hartel
Senior Vice President
Lic #01031013
949.263.5392
mhartel@voitco.com

Kevin M. Turner
Senior Vice President
Lic #00968394
949.263.5391
kturner@voitco.com

Joe Winkelmann
Senior Vice President
Lic #01259378
949.263.5394
jwinkelmann@voitco.com

Jeff Buckley
jeff@makairares.com
949.872.1740



Voit
REAL ESTATE SERVICES

2020 Main Street, Suite 100, Irvine, CA 92614 • 949.851.5100 • 949.261.9092 Fax • Lic #01333376 | www.voitco.com

The information contained herein has been obtained from sources we deem reliable. While we have no reason to doubt its accuracy, we do not guarantee it. ©2010 Voit Real Estate Services, Inc. All Rights Reserved. Real People. Real Solutions.™ is a trademark of Voit Real Estate Services.

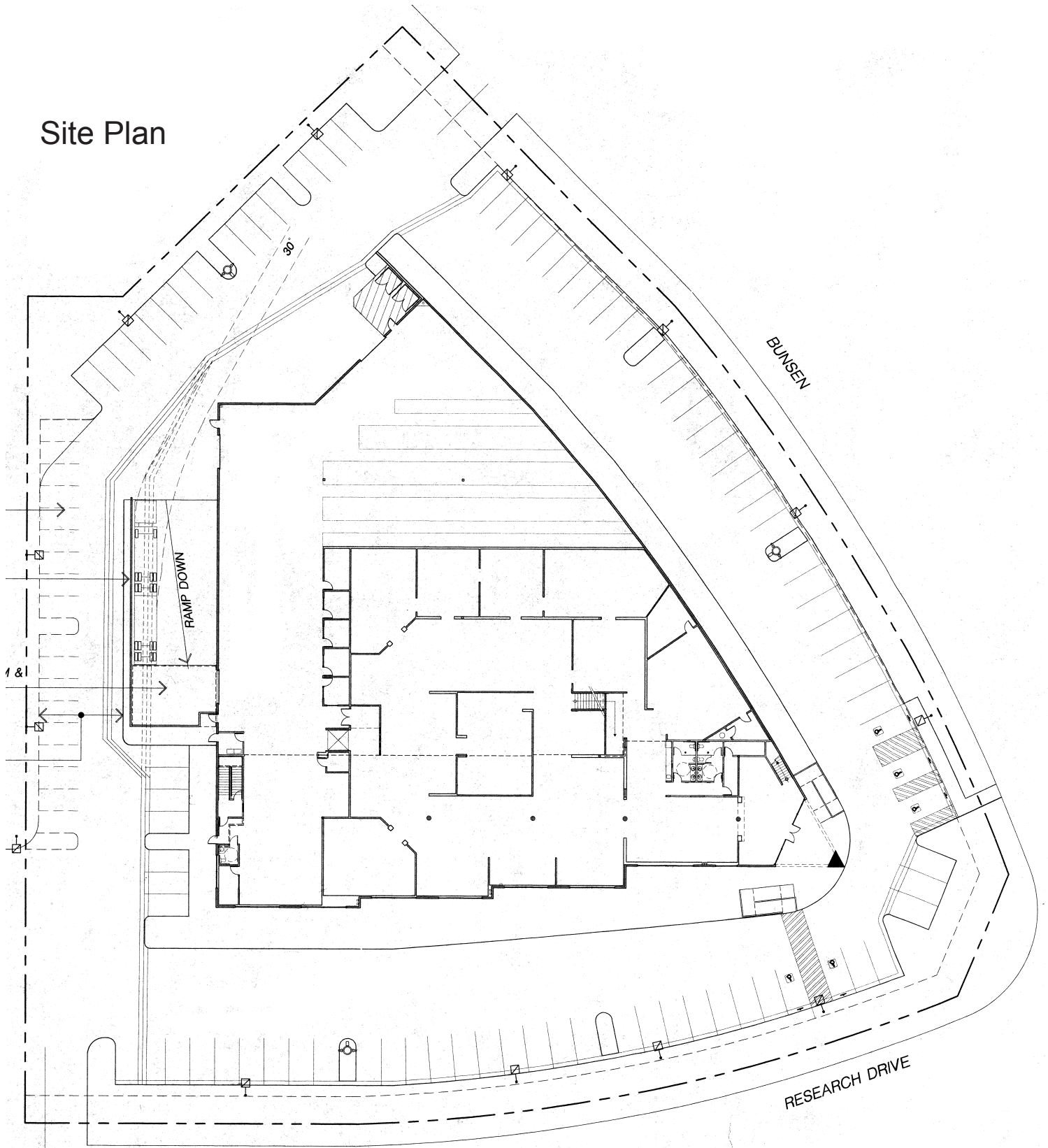


FOR SALE - 41,685 SF R&D BUILDING

Irvine Spectrum

8650 Research Drive, Irvine, CA

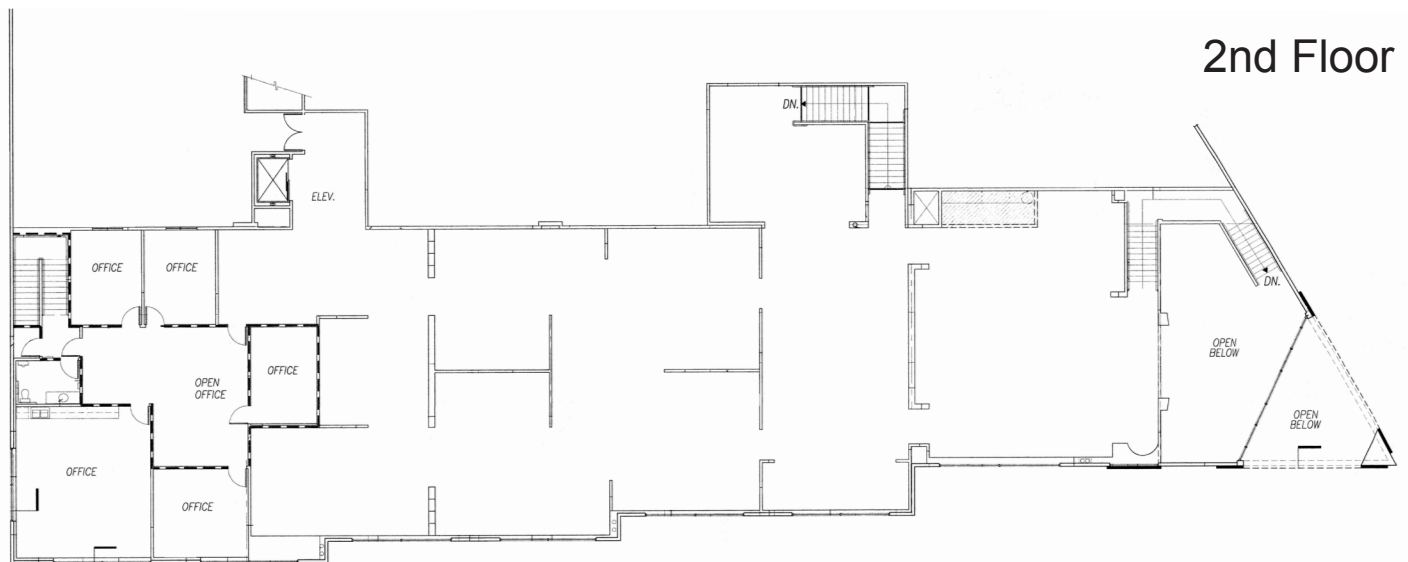
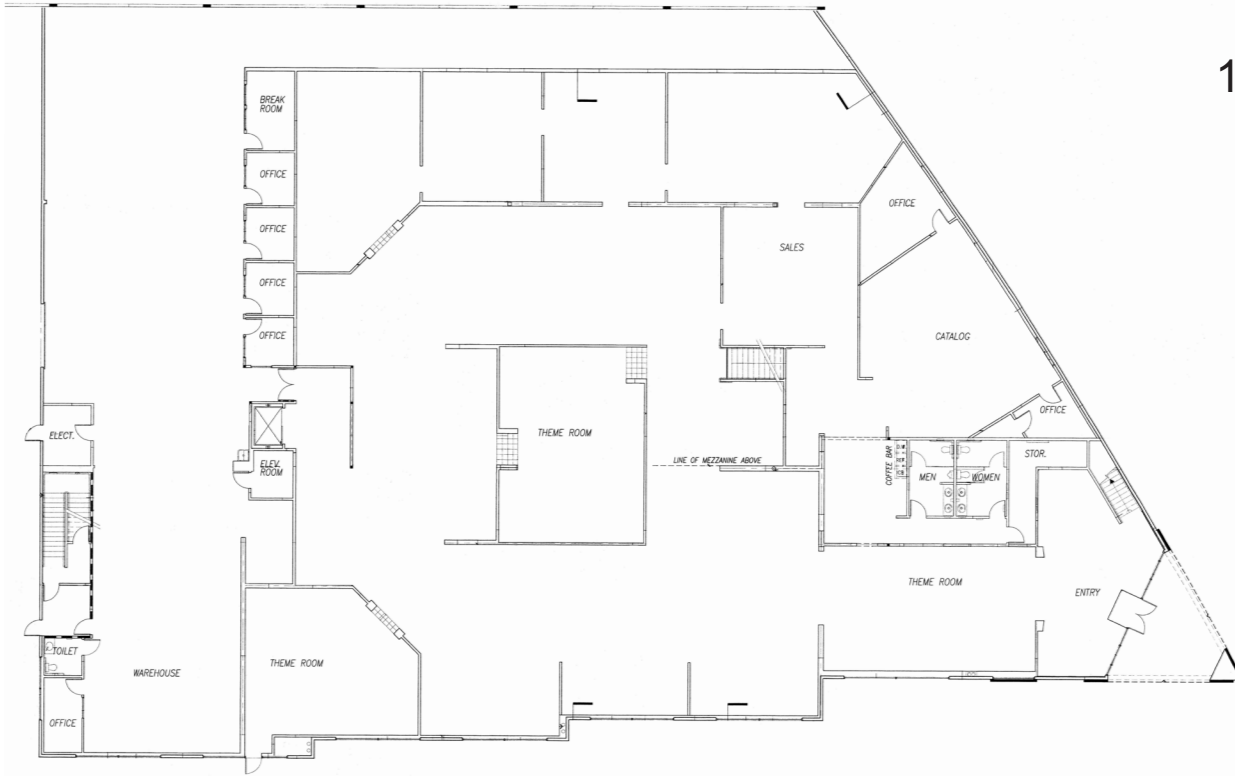
Site Plan



FOR SALE - 41,685 SF R&D BUILDING

Irvine Spectrum

8650 Research Drive, Irvine, CA

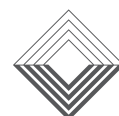


Michael J. Hartel
Senior Vice President
Lic #01031013
949.263.5392
mhartel@voitco.com

Kevin M. Turner
Senior Vice President
Lic #00968394
949.263.5391
kturner@voitco.com

Joe Winkelmann
Senior Vice President
Lic #01259378
949.263.5394
jwinkelmann@voitco.com

Jeff Buckley
jeff@makairares.com
949.872.1740



Voit
REAL ESTATE SERVICES